



Orange Enterprises Inc
 Fresno, Oakland, CA
 (559) 229-2195
 (800) 656-7264
 www.TigerJill.com

PET Tiger – The #1 Choice for Real Time Payroll Data Collection



PET Tiger – Orange Enterprises’ (Payroll Employee Tracking) software is the top choice in today’s agricultural market for Real Time payroll data collection.

PET Tiger manages every aspect of labor and productivity in your operation; your field workers, labor contractors’ field workers, packing house employees, equipment, administration, as well as all other employees in their respective positions. All activities are accumulated into **ONE** database for a complete solution.

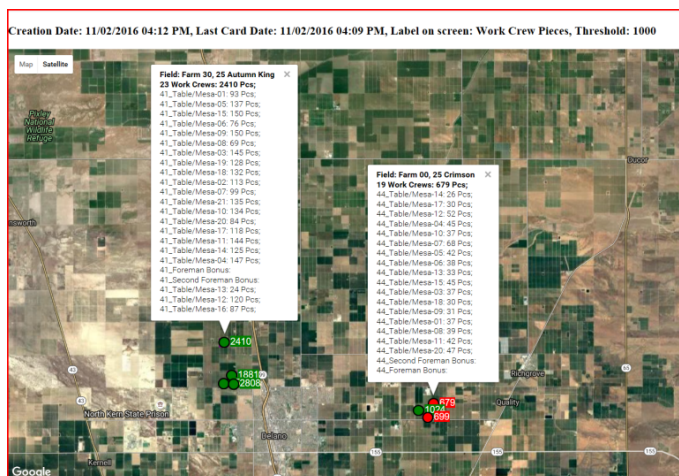


Leaders in the Ag industry are using PET Tiger to manage their operations. Each user has a unique configuration for collecting data from multiple types of devices into one central database. Payroll data is sent to any accounting system or service. Any size operation, from the family farm to global enterprises can benefit from this paperless and wireless system.

The capability of **smart devices**, such as iPhone, iPad, Android and Window’s has opened new

avenues for the development of management tools using the same data as the payroll. PET Tiger utilizes many of these features to provide comprehensive maps, simpler ways of collecting time, attendance and piece data, work order assignment and completions, as well as equipment maintenance, billing and cost accounting.

The PET Tiger **Mapping Module** provides real time data in a concise and visual way. Using the devices’ GPS along with Google Maps PET Tiger shows a large range of possible datasets in a manner that is easy to read and understand at a glance.

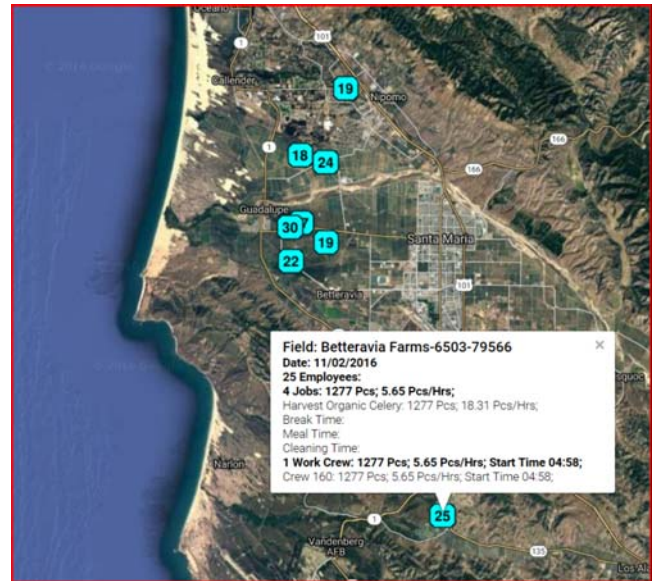




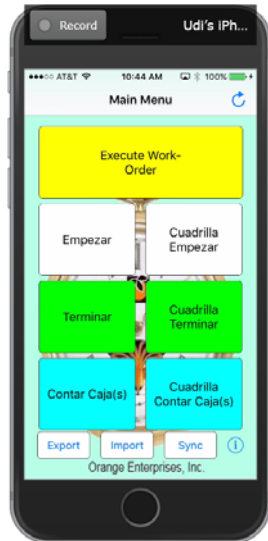
Orange Enterprises Inc
 Fresno, Oakland, CA
 (559) 229-2195
 (800) 656-7264
 www.TigerJill.com

With hundreds of possible criteria combinations users provide management pertinent information needed to effectively deploy their work force, prepare for outgoing produce orders, track equipment, as well as a many other management functions.

PET Tiger maps can include details as well. See who is working where, what commodity or package size is being harvested, what piece of equipment is being repaired etc. It is all in the hands of the user/management.



The definition of a ‘threshold’ allows color coding of the data shown on the map. Green means the data is above the defined threshold, while red means they are below. Blue icons mean that no threshold was defined.



It is possible to receive a notification with the Map(s) created on your smart device and view it from anywhere you have service. This feature adds yet another layer of how PET Tiger helps owners, managers, supervisors

PET Tiger’s **Work Order Module** facilitates the creation and completion of work orders on the IOS system. Users select the work order on their device and assign the employees in the crew that will be doing the work. This creates their time in and assigns the time worked to that Work Order for billing purposes. When used in conjunction with the **Grower Billing Module** PET Tiger will generate invoices for all the time involved in the completion of each work order along with the defined “commission.”

The **Orange Time Clock** works on IOS and Windows devices. It is a simplistic and inexpensive time clock for tracking time and attendance. Users can incorporate the devices’ camera as a barcode scanner or pair a bluetooth scanner/RFID reader. Using PET Tiger Employee’ defaults the time cards are created upon import to the PC PET Tiger.





Orange Enterprises Inc
 Fresno, Oakland, CA
 (559) 229-2195
 (800) 656-7264
 www.TigerJill.com

Single User Devices allow users to electronically collect the data from employees that work on their own and may not go into the office regularly. The system sets on an employee's device only the necessary setup items (fields, cost center, job etc.) needed for that one person allowing for them to quickly create and submit their time in and time out each day.



Equipment Module provides for the tracking of maintenance and use of each piece of equipment. This allows for separate cost accounting of equipment throughout the operation and with the **Grower Billing Module** bill for the usage hours.

Compliance with Regulations is a breeze with PET Tiger! PET manages overtime, multi-state minimum wage rates, irrigator pay and average non-productive pay. PET has the ability to record employee training sessions and produce certificates of completion. It then verifies that an employee has been trained for specific jobs or equipment before they can be clocked in. Union wage requirements and Alternative Work Schedules are also handled. PET Tiger also has the ability to verify meal breaks are taken if an employee works over a specified number of hours. The **Bonus Module** provides the ability to handle the Fair Food Premium as well as create a variety of other bonus calculations. H2A contracts can be entered and statements generated with the **H2A Module**.

New Development is always happening with PET Tiger. Currently we are working on developing Food Safety and ACA modules. Many accounting systems do not provide this data tracking so Orange Enterprises is developing new modules to meet customer requests. We strive to respond to customers' requests for new features, reports and modules in order to give our users the best and most comprehensive system available. Since PET Tiger is a modular program you purchase only the parts of PET you need and want.



Onsite and online installation and training are available to all users. PET Tiger also provides extensive help screens within the program. Orange Enterprises, Inc. works with users to tailor the system to their needs

The ability to collect and manage your entire operation's labor and productivity can be at your fingertips 24/7. Functionality like parts inventories, fuel tracking, and irrigation management are other modules available within



Orange Enterprises Inc
Fresno, Oakland, CA
(559) 229-2195
(800) 656-7264
www.TigerJill.com

the PET Tiger system. PET Tiger provides a complete solution to track your labor data, productivity, piece counts, cultural activities, packing, shipping, and traceability.

Orange Enterprises, Inc. incorporates the newest mobile and biometric technology into today's payroll accounting software giving its user a seamless, paperless and wireless labor tracking solution.

For more information on deploying PET Tiger in your operation, contact [Udi Sosnik](mailto:Udi.Sosnik).

PET Tiger™
Management in Real-Time
1.800.656.7264
orangesoftware.com

- Complete Payroll Tracking
- Biometrics, Smart Devices
- Productivity and Traceability
- Compliance with Regulation
- Labor Contractor Transparency
- Real-Time Mapping Notification
- Pay by Hourly, Piece, or Combination
- Time Clock Solution for all Branches
- Barcodes, RFID, NFC, GPS, GIS

Integrating Software & Technology since 1984

Windows Apple Android PET Tiger

Fresno, Oakland California

www.TigerJill.com

(800) 656-7264